



النشرة الاقتصادية



نشرة دورية تصدر عن الإدارة العامة للبحوث الاقتصادية والإحصاء - بنك السودان

الفترة 1 - 2005/6/30

العدد رقم 191

()

: *

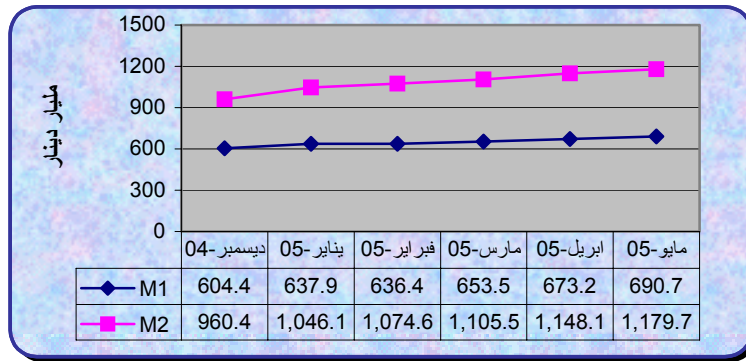
(1)

2005	2005	2005	2005	
1,179.7	1,148.1	1,105.5	1,074.6	
317.2	321.8	323.0	311.1	
373.5	351.4	330.5	325.3	
489.0	474.9	452.0	438.2	
1,283.9	1,230.7	1,168.0	1,149.5	()
538.5	527.2	506.1	477.5	
829.7	797.2	758.9	742.6	
%31.7	%30.6	%29.9	%30.3	/
%26.9	%28.0	%29.2	%29.0	/
%41.5	%41.4	%40.9	%40.8	/
%64.9	%66.1	%66.7	%64.3	/

*

2005 - 2004

(2)



*

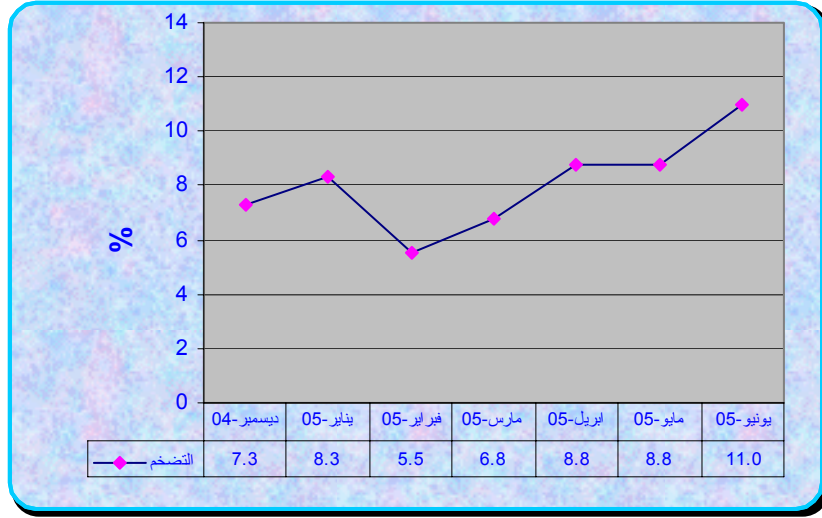
2005

(%11.0)

(%8.8)

(3)

(2004 - 2005)



*

(4)

()

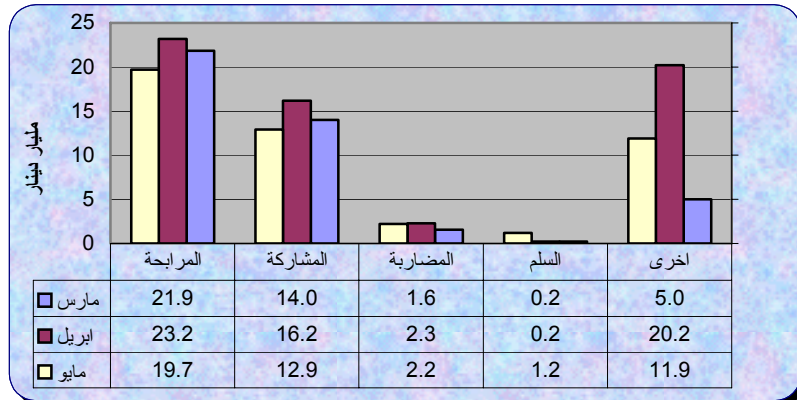
2005/6/30		2005/5/31	
131.5	340.8	126.9	349.4
2.1	48.8	2.3	39.7
156.9	136.1	137.6	129.2
63.9	10.3	61.0	10.4
0.0	3.2	0.0	3.1
354.4	539.2	327.8	531.8
893.6		859.6	

*

(2005/ 6/30 - 1)

(5)

41.1% 10.3% () ()
 . () % 18 () % 8.0 ()
 . () % 80 () % 10 ()
 :(2005 -) ()



(2005)

()

()

%	*	%		
8.8	30.5	5.6	2.7	
12.6	43.8	16.3	7.8	
38.1	132.9	24.0	11.5	
9.6	33.5	8.8	4.2	
1.7	5.9	3.8	1.8	
7.0	24.5	7.5	3.6	
22.2	77.4	34.0	16.3	
100.0	348.5	100.0	47.9	

*

: 2005 30

: (6)

()

246.40	
247.63	

: ()

()

249.9	249.2	247.0	250.7	246.3	250.0	
251.3	250.5	249.8	251.8	249.0	251.0	

:

()

: 2005

(7)

()

2005	2005	2005	
<u>90.20-</u>	<u>196.11-</u>	<u>57.54-</u>	(2+1)
21.18	81.19-	51.30	.1
111.38 -	114.92-	108.84 -	.2
191.45	233.11	69.07	
129.23-	11.43-	188.45	
<u>27.98-</u>	<u>25.57</u>	<u>199.98</u>	

*

:

(8)

()

89.8	15.9	2005/6/27-2005/6/1

(2005 -2004)

()				
%		<u>2005 / 6 /27 -1/1</u>	<u>2004 / 6 /27 -1/1</u>	
%87	108.3	232.5	124.2	
%51	150.6	446.0	295.4	
%25-	42.3	(213.5)	(171.2)	

(% 10 23.0) :
 .(%7 16.0)
 .(%13 56.3) :
 .(%8 37.2) :

*
*
*
*
(9)

		*		
		988,128	2005/5/28	2005/35
		582,082	2005/5/22	2005/39
		970,422	2005/5/20	2005/41
		1,000,000	2005/5/31	2005/42
		400,000	2005/6/4	2005/43
		800,000	2005/6 /10	2005/44
		600,000	2005/6/4	2005/45

:2005/ 6/30 ()

(10)

()		
100,519.4	2,010,388	2005/5/31
10,300.0	206,000	
-	-	
110,819.4	2,216,388	2005/6/30

2005/ 6/30 -1

()

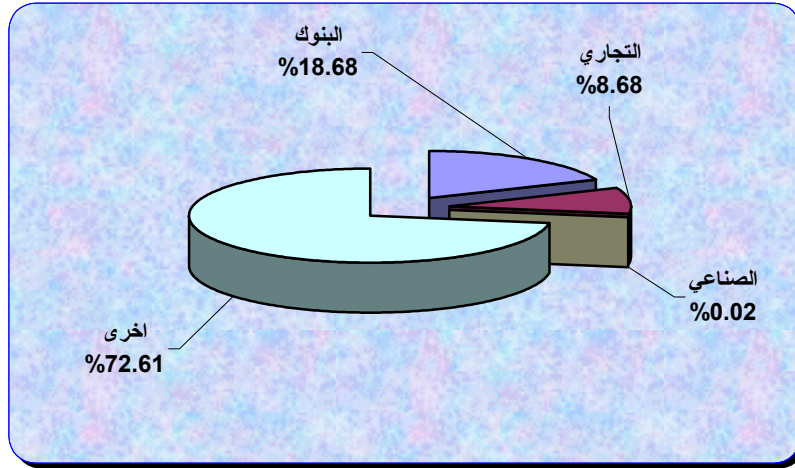
13

(1)

	%	()		
18	18.68	37.79	8,814,503	
43	8.68	17.56	27,347,751	
2	0.03	0.05	738	
22	72.61	146.89	23,566	*
85	100.00	202.29	36,186,558	

()

*



:

	()		
4	0.87	875	
1	0.02	2	2004
5	0.89	877	

:

2005 / / 12 (2005/6)

(11)